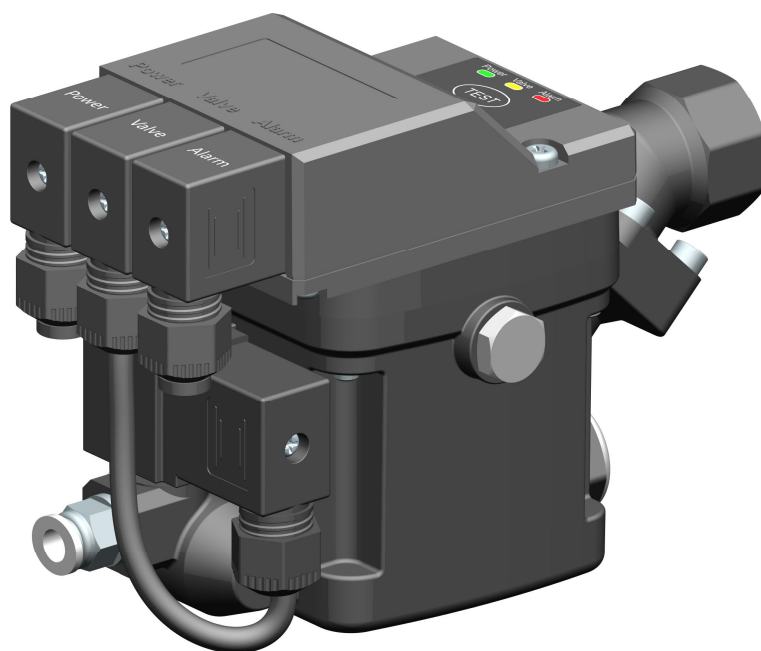


All-rounder of Electronic Zero Loss Drain



SD-300E

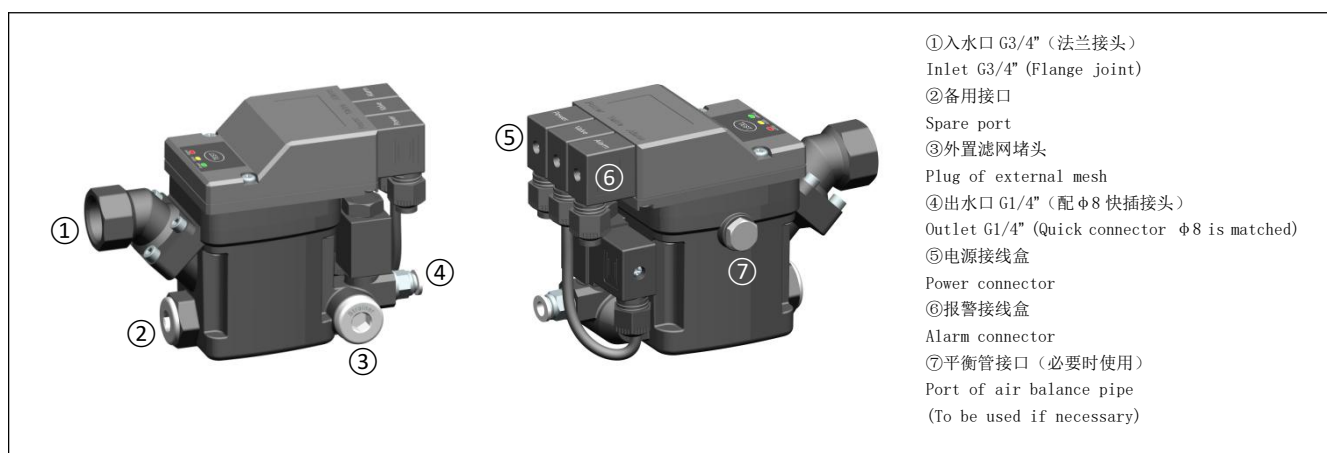
电子零气耗排水器

Electronic Zero Loss Drain

技术参数 Data sheet

产品型号 Product model	SD-300E
产品特点 Product features	①结构经典, 功能齐全, 应用广泛 ②入水口法兰连接, 方便安装, 并可实现垂直入水和水平入水的自由切换 ①Classic structure, full-featured, widely used. ②Flange connection at the water inlet, convenient installation, and can freely switch between vertical and horizontal water entry.
应用场合 Applications	通用型, 如空压机冷却器、分离器、储气罐、冷干机等 General purpose, such as cooler, separator, air tank, refrigeration dryer
工作压力 Working pressure	0-1.6 MPa
最大排水量 Max. discharge volume	30 L/h
推荐适用空压机容量 Recommended compressor capacity	25 m ³ /min
推荐适用冷干机容量 Recommended refrigeration dryer capacity	50 m ³ /min
推荐适用过滤器容量 Recommended filter capacity	250 m ³ /min
适用介质 Applicable media	水、含油冷凝水 Water, Oil-containing condensate
介质温度 Temperature of medium	1-60 °C
环境温度 Temperature of ambient	1-60°C (零下温度可选用加热棒附件) 1-60°C (Drain Heater is optional for sub-zero temperature)
入口尺寸 Inlet	G3/4" 垂直入水和水平入水可自由切换 Free switch between vertical and horizontal water entry
出口尺寸 Outlet	Φ8 (G1/4")
平衡回路接口 Port of air balance pipe	G1/4"
排放阀类型 Type of discharge valve	电磁阀 Solenoid valve
过滤网 Strainer mesh	有(外置滤网) Yes (External mesh)
容器壳体材质 Material of housing	铝 Aluminum
手动排水功能 Manual function	有 Yes
安装位置 Installation position	如图片所示 As shown in pictures
防护等级 Protective class	IP65
标准电压 Supply voltage options	24V AC/DC、110V AC、220V AC
报警功能 Alarm function	同时提供 N.O(报警接通)和 N.C(报警断开)两种形式的无源触点输出 Two kinds of alarm contacts of normally open(N.O) (switch on when alarm) and normally closed(N.C) (switch off when alarm) are available at the same time
报警触点负载 Load of alarm contacts	交流电最大负载 62.5VA, 直流电最大负载 60W Max. 62.5VA for alternating current, Max. 60W for direct current
外形尺寸 长*宽*高 (mm) Overall dimensions L* W * H (mm)	185 * 74 * 128
产品净重 N. W.	1.2 kg

结构 Structure



安全提示：在安装和维护排水器之前，排水器必须处于断电、无气压状态！

Safety Warning: The drain valve must be in a state of power off and no pressure before cleaning and maintaining it!

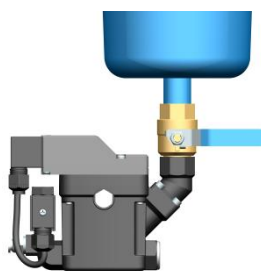
安装 Installation

排水器安装 Installation of drain

垂直入水的安装方法 Vertical water inlet

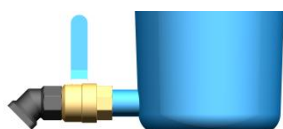


首先安装法兰接头
Install flange joint

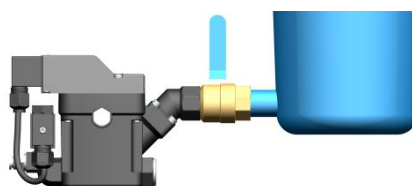


其次安装排水器主体
Install drain valve

水平入水的安装方法 Horizontal water inlet



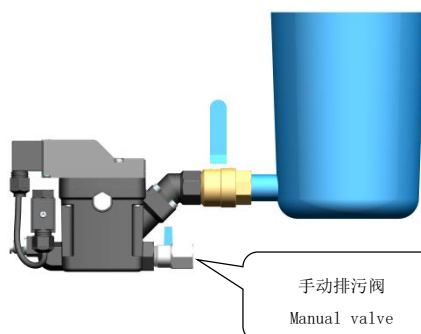
首先安装法兰接头
Install flange joint



其次安装排水器主体
Install drain valve

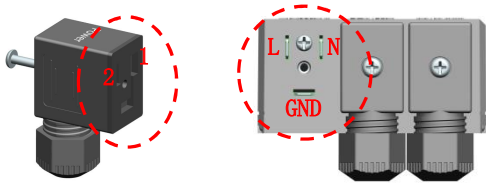
推荐装手动排污阀，定期冲洗罐体

A manual valve to flush tank regularly is recommended to be set



排水器接线 Electrical connection

电源接线 Connection of power supply



电源电压必须正确!

交流电: 火线接 1 (L), 零线接 2 (N), 地线口接地。

直流电: 正极 (+) 接 1, 负极 (-) 接 2, 地线口接地。

电缆锁头要锁紧, 接线盒螺钉要拧紧, 确保防水。

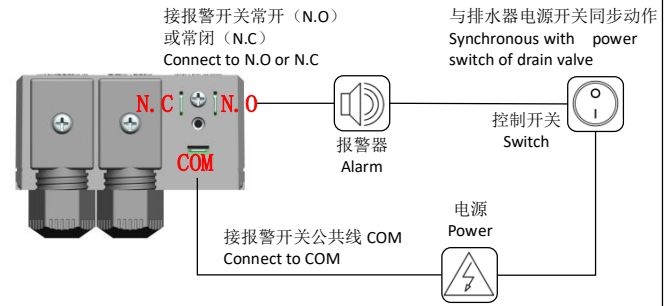
Voltage of power must be correct!

For alternating current: Terminal 1 is connected to live line (L), terminal 2 is connected to neutral line (N), and ground terminal is grounded.

For direct current: Terminal 1 is connected to positive (+), terminal 2 is connected to negative (-), and ground terminal is grounded.

Ensure the cable lock is tightened and the connector screw is secured to guarantee waterproofing.

报警接线 Connection of alarm signal



同时提供 N.O (报警接通) 和 N.C (报警断开) 两种形式的无源触点输出。

电缆锁头要锁紧, 接线盒螺钉要拧紧, 确保防水。

Two kinds of alarm contacts of normally open (N.O) (switch on when alarm) and normally closed (N.C) (switch off when alarm) are available at the same time.

断电时: COM 与 N.O 接通, 与 N.C 断开

COM is connected to N.O and disconnected from N.C when power-off

通电时: COM 与 N.O 断开, 与 N.C 接通

COM is disconnected from N.O and connected to N.C when power-on

报警时: COM 与 N.O 接通, 与 N.C 断开

COM is connected to N.O and disconnected from N.C when alarm

使用 Use

维护建议 Maintenance advice

- 定期按下 TEST 按键, 检测排水器功能。
- 过滤网每月清理一次, 冷凝水杂质多的工况需要增加清理次数, 必要时更换易损件。
- Push TEST regularly to check drain valve.
- Strainer mesh should be cleaned once a month. Number of cleaning times shall be increased for the working condition with lots of impurities. Wearing parts shall be replaced when necessary.

